



4-H Family News

January 2025

Jackson County Connections



KEEP AN EYE OUT!!!

Small Animal and Large Animal Expectations packets will be emailed out soon. You will also be able to find them on our website.

<https://www.canr.msu.edu/jackson/4-h/>



CONTACT US

Hayley Wineland
winela11@msu.edu
4-H Program Coordinator

Jessica Waldron
waldro45@msu.edu
4-H Program Assistant

Gerilyn Darnell
darnel37@msu.edu
Support Staff

PHONE & EMAIL:

(517) 788-4292

msue.Jackson@county.msu.edu

WEBSITE:

<https://www.canr.msu.edu/jackson/4-h/>



Stay Connected

* Jackson County 4-H Facebook Page:

<https://www.facebook.com/jacksoncounty4h>

* Jackson Co. 4-H Small Animal Assoc. Facebook Page:

<https://www.facebook.com/JacksonCountySmallAnimal>

* Jackson County 4-H Livestock Assoc. Facebook Page:

<https://www.facebook.com/JacksonCountyLargeAnimal>

* Jackson County Horse Council Facebook Group:

<https://www.facebook.com/groups/232601997473213>

MSU is an affirmative-action, equal-opportunity employer, committed to achieving excellence through a diverse workforce and inclusive culture that encourages all people to reach their full potential. Michigan State University Extension programs and materials are open to all without regard to race, color, national origin, gender, gender identity, religion, age, height, weight, disability, political beliefs, sexual orientation, marital status, family status or veteran status. Issued in furtherance of MSU Extension work, acts of May 8 and June 30, 1914, in cooperation with the U.S. Department of Agriculture. Quentin Tyler, Director, MSU Extension, East Lansing, MI 48824. This information is for educational purposes only. Reference to commercial products or trade names does not imply endorsement by MSU Extension or bias against those not mentioned.



COUNTY CALENDAR OF EVENTS

January Meetings

Tuesday 7th: Cloverbud
*See flyer for details



Thursday 9th: Pocket Pets
*See flyer for details

Monday 13th: Horse Council Meeting at 7pm

Tuesday 14th: Small Animal Meeting at 7pm

Wednesday 15th: Large Animal Meeting at 7pm

Wednesday 22nd: Small Animal Expectations at 6:30pm

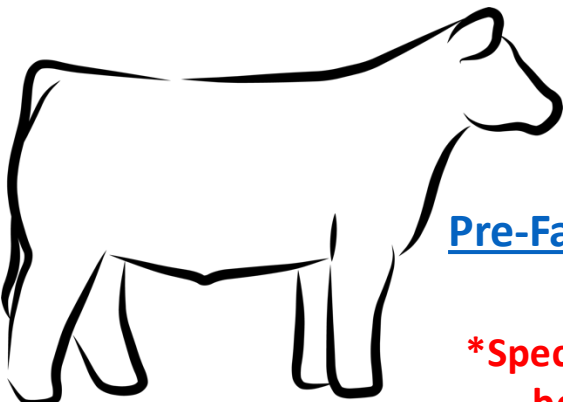
Monday 27th: Youth Council at 6pm

MSU Extension Office
1715 Lansing Ave Ste #257
Jackson, MI 49202

MSU Extension Office
will be closed on the
following days:
Monday, January 20th



SMALL ANIMAL EXPECTATIONS MEETING: GOATS – RABBITS – DOGS - POULTRY
Each small animal species superintendent will go through their expectations packets. Youth and families will learn what is expected to raise and show this specie and can ask questions!!



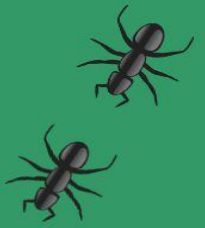
BEEF DNA Drop Off & PRE- FAIR CHECK IN
FEBRUARY 1st 9:00-11:00am
Jackson MSU Extension Office

[Pre-Fair Check In Link](#) –Must be filled out and submitted by 11am Feb 1st

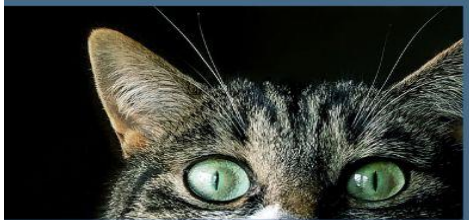
Specific pictures of animals with youth and RFID tags will be needed so do not wait to fill out at the office!!



JACKSON COUNTY 4-H POCKET PETS & CATS



If you have a bird, a reptile, a cat, an ant farm, a gerbil or any other holdable pocket pet, then this is the club for you! Through hands on activities and special guest speakers you'll learn all about your pocket pet's needs, develop skills to keep them healthy, explore different careers in this field and you'll even get to show your pet at the Jackson Co. Fair.



MEETING DATES:

- *Jan 9th *Feb 13th
- *Mar 13th *Apr 10th
- *May 8th *June 12th

TIME:

6:00pm -7:30pm

MSU EXTENSION OFFICE

1715 LANSING AVE
STE 257
JACKSON, MI 49202



SIGN UP AT
WALDR045@MSU.EDU
FOR MORE INFORMATION
CONTACT

Jessica Waldron
at 517-788-4292



MSU is an affirmative-action, equal-opportunity employer, committed to achieving excellence through a diverse workforce and inclusive culture that encourages all people to reach their full potential. Michigan State University Extension programs and materials are open to all without regard to race, color, national origin, gender, gender identity, religion, age, height, weight, disability, political beliefs, sexual orientation, marital status, family status or veteran status. Issued in furtherance of MSU Extension work, acts of May 8 and June 30, 1914, in cooperation with the U.S. Department of Agriculture. Quentin Tyler, Director, MSU Extension, East Lansing, MI 48824. This information is for educational purposes only. Reference to commercial products or trade names does not imply endorsement by MSU Extension or bias against those not mentioned.

JACKSON COUNTY 4-H CLOVERBUDS

JOIN THE FUN!!

- *JANUARY 7TH - DREAM CATCHER
- *FEBRUARY 4TH - CANVAS PAINTING
- *MARCH 4TH - CHEF CLOVERBUD
 - *APRIL 1ST- COUNCIL NIGHT
- *MAY 6TH - DAHLEM CENTER
- *JUNE 3RD- GARDENING

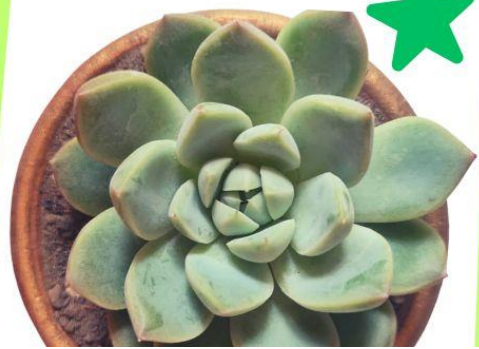
OPEN TO ALL JACKSON COUNTY 4-H MEMBERS 5-7 YRS OLD FOR MORE INFO PLEASE CONTACT JESSICA WALDRON AT 517-788-4292 OR WALDRO45@MSU.EDU

ALL ACTIVIES ARE FROM 6-7:30PM COST \$7 PER ACTIVITY MSU EXTENSION OFFICE 1715 LANSING AVE STE 257 JACKSON, MI 49202



REGISTER AT:
WALDRO45@MSU.EDU
BY THE FRIDAY
BEFORE EACH CLASS

MSU is an affirmative-action, equal-opportunity employer, committed to achieving excellence through a diverse workforce and inclusive culture that encourages all people to reach their full potential. Michigan State University Extension programs and materials are open to all without regard to race, color, national origin, gender, gender identity, religion, age, height, weight, disability, political beliefs, sexual orientation, marital status, family status or veteran status. Issued in furtherance of MSU Extension work, acts of May 8 and June 30, 1914, in cooperation with the U.S. Department of Agriculture. Quentin Tyler, Director, MSU Extension, East Lansing, MI 48824. This information is for educational purposes only. Reference to commercial products or trade names does not imply endorsement by MSU Extension or bias against those not mentioned.





Jackson County 4-H



The Pie Lab

Join us for a four-session class all about pies! In this course, you'll learn both sweet and savory pie techniques while making shepherd's pie, pizza pie, a mixed berry pie, and Michigan's very own handheld pastry, the pasty. Each participant will take home their own pie to finish baking at home, along with a recipe book.

WHEN:

February 5th, 12th,
19th & 26th

TIME: 6-7:30PM

WHERE:

MSU Extension
Office
1715 Lansing Ave
Ste #257
Jackson, MI

COST: \$25

*Payment in full is
due at beginning of
1st class

For more
information, please
contact Jessica
Waldron at
waldro45@mu.edu



Any Jackson County 4-H Youth Member is
welcome to attend.

**DEADLINE TO REGISTER:
FRIDAY JANUARY 31st, 2025**

**REGISTER AT:
waldro45@msu.edu**



MSU is an affirmative-action, equal-opportunity employer, committed to achieving excellence through a diverse workforce and inclusive culture that encourages all people to reach their full potential. Michigan State University Extension programs and materials are open to all without regard to race, color, national origin, gender, gender identity, religion, age, height, weight, disability, political beliefs, sexual orientation, marital status, family status or veteran status. Issued in furtherance of MSU Extension work, acts of May 8 and June 30, 1914, in cooperation with the U.S. Department of Agriculture. Quentin Tyler, Director, MSU Extension, East Lansing, MI 48824. This information is for educational purposes only. Reference to commercial products or trade names does not imply endorsement by MSU Extension or bias against those not mentioned.



STATEWIDE CALENDAR OF EVENTS

Attend the State 4-H Rabbit & Cavy Show & Expo



Join us for the 2025 State 4-H Rabbit and Cavy Show and Expo at the MSU Pavilion! Youth may choose to exhibit their rabbit and/or cavy as well as to compete in other contests such as breed identification, photography, educational display, showmanship, and new this year -skillathon.

Showmanship exhibitors are required to pre-register by January 17. All other contest registrations are done onsite at the show.

Educational sessions will also be scheduled throughout the day with the support of The Rabbit School and Rabbit Tutor.

Learn more at:
www.canr.msu.edu/events/2025_showmanship_rabbit_and_cavy_show.

January 6: Online Parent Talk System Series (Mondays in January and February)

Online

This parenting workshop is designed to improve communication and provide practical verbal strategies for raising confident, caring, responsible children. This class is for caregivers of toddlers to teens and will take place on Monday evenings for six weeks, beginning on Jan. 6.

www.canr.msu.edu/events/the-parent-talk-system-series-january-february-25

January 14: Wild Spartans – Working my dream job with Michigan Sea Grant

Online

Take a look into life working with fisheries and wildlife! This month, delve into the freshwaters and skies that surround as you meet Elliot Nelson with Michigan Sea Grant. You'll learn about his work, and the education and career path he followed to get there. Youth will be encouraged to ask questions to learn more through a live Q&A. This free virtual series is youth ages 12-19. www.canr.msu.edu/events/wild-spartans-monthly-wildlife-fisheries-webinar-series-january-2024-2025

January 14: Adulting 101 – Decreasing Stress with Mindfulness

Online

Are you ready to leave for college or be out on your own? Are you prepared to do adult tasks related to finances, home, health or finding a career? Adulting 101 can help you learn real life skills to successfully transition to living independently. In this session, learn how stressors can affect physical and mental health and practice mindfulness techniques to use in everyday life.

www.canr.msu.edu/events/adulting-101-2025

January 23: Gearing up for success through apprenticeships: Advance your career in automotive research and development

Online

Are you passionate about vehicles and ready to jump-start your career? Enjoy technology, robotics and hands-on problem solving? Join this webinar designed to provide valuable insight into the skills and certifications you need to excel in today's fast evolving automotive industry.

www.canr.msu.edu/events/gearing-up-for-success

January 30: Michigan 4-H Volunteer Webinar – Building a Culture of Appreciation by Recognizing 4-H Volunteers and Youth

Online

Discover simple, impactful ways to celebrate and recognize volunteers and youth involved in your club.

www.canr.msu.edu/events/michigan-4-h-volunteer-webinar-series-building-a-culture-of-appreciation-recognizing-4-h-volunteers-youth-noon

www.canr.msu.edu/events/michigan-4-h-volunteer-webinar-series-building-a-culture-of-appreciation-recognizing-4-h-volunteers-youth-7pm





Our Foundations of Gardening class is completely online!
Perfect for the gardener who wants to learn more, but doesn't want to brave icy roads and finding a parking spot.

Register now through January 29th. Classes run February-April. Just in time for spring!

<https://www.canr.msu.edu/courses/foundations-of-gardening>

MICHIGAN STATE UNIVERSITY | Extension 

 **Foundations of GARDENING**

Go **GREEN** this winter
Learn gardening from MSU experts

 **Partial Scholarships available**
Applications accepted Oct 16-Nov 13

 **Registration opens December 4th**
Thursdays 6-8:30 Feb 13- April 17, 2025

Want to learn more?
[canr.msu.edu/courses/foundations-of-gardening](https://www.canr.msu.edu/courses/foundations-of-gardening) 





STATEWIDE 4-H NEWS



Register today for Michigan 4-H Capitol Experience!

At Michigan 4-H Capitol Experience, teens learn how to change the world for the better through engagement in Michigan's state government and public policy process. The program is scheduled for March 16-18, in Lansing.

The three-day event, open to high-school-aged youth, includes tours of the Michigan Capitol, interactions with state legislators, meetings with state agency staff, lobbyists and state-level experts and learning how policy is made. During the program, youth work in small teams to draft legislation on:

agriculture; civil rights; crime, law enforcement and corrections; education; energy, environment and natural resources; health and human services; and jobs and the economy.

The cost to register in 2025 is \$365, which includes most meals, materials, and lodging at the Okemos Conference Center. Please contact your local 4-H program coordinator to inquire about local funding opportunities. To learn more and/or find the link to register, visit www.canr.msu.edu/4_h_capitol_experience/.

Resolve to have a great 4-H year

Adapted from: www.canr.msu.edu/news/resolve_to_have_a_great_4_h_year.

As we start the New Year, how can 4-H clubs resolve to improve in the year ahead? Here are ten suggestions to make the upcoming year a successful one.

Resolve that:

1. Club meetings will start and end on time.
2. Business meetings will follow Robert's Rules of Order and that all club paperwork, such as minutes, club inventory and financial statements, will be completed in a timely manner.
3. All members will take part in discussions and have a say in decisions that are made. Keep a chart with each members' name and when they speak at business meetings.
4. The club meeting place will be a safe, comfortable and welcoming environment for all club members.
5. Fun will be included in each meeting.
6. A learning activity will be included in each club meeting. Ideas include exploring a new 4-H curriculum, having members volunteer to do a demonstration, doing a show and tell about each members' favorite project, or bringing in a guest speaker.
7. The club will pursue at least one community service project chosen, planned and celebrated by the club.
8. New members will have a buddy they may talk with about any 4-H questions.
9. The 4-H pledge will be said at every meeting.
10. Every club member will be recognized in some way to let them know they are cared about.



SAVE THE DATE – Michigan 4-H Day at the Breslin

Michigan 4-H Day at the Breslin returns on March 1, 2025! For nearly two decades, this has been exciting event attended by Michigan 4-H youth, volunteers and families. We look forward to continuing this event in 2025 as 4-H'ers from across the state come together for a day of fun, comradery and basketball at MSU.

Make plans to join us on March 1 as the MSU Women's Basketball team takes on the Minnesota Gophers. Tickets will be available soon; visit www.canr.msu.edu/events/4-h-day-at-the-breslin for more information.

Birth Management for Sheep and Goats 2025

- Would you like to improve the birth management of your herd or flock? The MSU Small Ruminant Extension team is offering a 4-part webinar series on birth management and separate workshop that will blend applied science and years of practical experience on a comprehensive set of topics that will help you improve your birth management skills. **Participants will learn preventative approaches, assessment skills, and treatment procedures.** Both novice and veteran producers alike will find this program valuable. Because of the amount and depth of information presented, participants have found attending this program more than once to be useful.
- Each weekly 2-hour session allows time to ask questions and will be recorded for future viewing. In addition, there will be a final, 4-h hands-on session held at the MSU sheep teaching and research center in East Lansing, MI. This final session is a workshop that focuses on practical skills related to birth management. You can attend the virtual sessions without attending the face-to-face session if you prefer.
- **Virtual sessions.** Each session will feature seminars, specialized instructional videos, and question & answer sessions with an expert panel to cover each of these topics (live sessions are 7-9 pm each Wednesday evening with each session recorded, including questions & answer components):
 - ✓ **Jan 2 (Thursday):** *"Nutritional management to optimize birth outcomes in sheep and goats."*
 - ✓ **Jan 8 (Wednesday):** *"Optimizing maternal and newborn health: parasite control, vaccination schedules, treating complications at birth, providing a healthy environment."*
 - ✓ **Jan 15 (Wednesday):** *"The normal birth process, birth assistance and newborn care."*
 - ✓ **Jan 22 (Wednesday):** *"Identifying challenges on your farm and creating an improvement plan addressing health management, nutrition and facility improvements."*
- **Birth management workshop at MSU sheep teaching and research center.**
 - ✓ **Jan. 25, noon-4 pm:** Hands-on demonstrations of newborn care and processing, bonding management, ultrasound diagnosis of pregnancy and diagnosis of newborn mortality. This is a supplemental workshop to demonstrate procedures used in birth management. The demonstration material presented in the workshop will also be covered in the virtual sessions. Please register for this event as a stand-alone item below. Warm drinks and light snacks will be available.
- **Instructors:** Richard Ehrhardt Ph.D., Senior Extension Specialist; Mike Metzger M.S., Extension educator; Barbara Makela, Research technician and Erin Recktenwald Ph.D., Research associate
- **Webinar registration (ends Sunday Dec. 29):** \$40/farm or family and includes supplemental educational materials including a 90+ page bound compendium/resource manual and a laminated newborn hypothermia/starvation treatment poster as well as access to all recorded sessions (additional members of the same farm/ family may receive additional manuals and posters for \$20 per set). All supplemental materials will be mailed right after the first session (participants from outside the USA will need to pay extra postage). Contact Mike Metzger for more details (phone: 517-788-4292; email: metzgerm@msu.edu). **Late registration** (after Dec. 29): \$60/farm.
- **Jan 25 Workshop Registration (ends Sunday Jan 12):** \$10/person

Registration is online only, and it may be completed at:

<https://events.anr.msu.edu/smallruminantbirthmanagement/>

MICHIGAN STATE
UNIVERSITY

Extension



2024 - 2025 Pesticide Classes

2024-2025 Pesticide Training and RUP Testing Sites



MSU Extension, MDARD PPPMD, and MSU Pesticide Safety Education Program are offering in-person Core Manual review classes followed by Core pesticide applicator certification testing. Fumigation and Aerial Standard tests will also be available.

PRIVATE CORE, FUMIGATION STANDARD, AERIAL STANDARD AND COMMERCIAL CORE TESTS ONLY. NO COMMERCIAL CATEGORY TESTS.

ATTENDANCE FOR THE CORE REVIEW IS MANDATORY TO PARTICIPATE IN THE IN-PERSON TESTING. REFUNDS OR DEFERRING TO OTHER LOCATIONS ARE ALLOWED ONLY UNDER CERTAIN CONDITIONS.

The 4-hour review covers the chapters of the National Pesticide Applicators Certification Core Manual. The review is held in the morning and the MDARD exams are given that afternoon. We recommend participants read and study the Core Manual before attending the review. Copies may be ordered from: <https://npsecstore.com/pages/michigan>. County Extension offices may also have copies available. Please call ahead for availability.

TIME:

- 8 a.m. Check-in
- 8:30 a.m. to 12:30 Core review class
- 12:30 Lunch is provided
- 1:00 p.m. MDARD testing session

REVIEW CLASS COST: Fee for the Core review class is \$25.00. Payable to Michigan State University or MSU.

MDARD TESTING COST: Fee for applicator certification is paid to the STATE OF MICHIGAN. Commercial Applicator certification fee is \$75.00, Private Applicator fee is \$50.00 and Registered Applicator fee is \$45.00. Military Veterans Private applicator certification fees are waived if a copy of their DD214 is provided.

A check payable to "State of Michigan" is the only payment accepted for the applicator certification fee. **Cash or credit card payments are not accepted.** MDARD will provide a Postage paid envelopes to send certification payment. **MDARD will NOT accept payment the day of the session**

MSU is an affirmative-action, equal-opportunity employer, committed to achieving excellence through a diverse workforce and inclusive culture that encourages all people to reach their full potential. Michigan State University Extension programs and materials are open to all without regard to race, color, national origin, gender, gender identity, religion, age, height, weight, disability, political beliefs, sexual orientation, marital status, family status or veteran status. Persons with disabilities have the right to request and receive reasonable accommodations.



2025 Regional Crop and Pest Management Updates

Learn about the latest recommendations for managing weeds, diseases, insects and nematodes from MSU Extension educators and specialists.

Jan 10—Bad Axe, Franklin Inn
Contact Huron County MSU Extension Office at 989-269-9949

Jan 15—Ithaca, Gratiot Isabella RESD
Contact Isabella County Extension at 989-317-4079

Feb 5—Dowagiac, Dowagiac Conservation Club
Contact the St Joseph MSU Extension Office at 269-467-5511

Feb 7 - Frankenmuth, SVREC
Contact Saginaw County Extension Office at 989-907-6520

Feb 11—Alpena, Alpena Community College
Contact Isabella County Extension Office at 989-317-4079

Feb 20- Hillsdale, Hillsdale ISD
Contact Jackson County Extension Office at 517-788-4292

Thanks to the support from our partners



MSU is an affirmative-action, equal-opportunity employer, committed to achieving excellence through a diverse workforce and inclusive culture that encourages all people to reach their full potential. Michigan State University Extension programs and materials are open to all without regard to race, color, national origin, gender, gender identity, religion, age, height, weight, disability, political beliefs, sexual orientation, marital status, family status or veteran status.

For more information and to register visit <https://events.anr.msu.edu/2025CropPestUpdate/> or scan the QR code



Registration is \$40 and includes lunch and the 2025 Weed Control Guide for Field Crops

RUP and CCA credits will be available at each meeting.

